

Explore

Big Sky

Best of

BIG SKY

THE RESULTS ARE IN!

Best Restaurant

Best Burger

Best Pizza

Best Apres

Best Bartender

Best Business

Best Hotel / Lodging / Guest Ranch

Best Annual Event

Best Outdoor Retailer

Best Trail in Big Sky

Best Ski Run in Big Sky

Best Real Estate Agency

Best Architect

Best Builder

Best Teacher in Big Sky

Best Artist / Photographer

Best Nonprofit

Big Sky Community Member of the Year



OUTLAW PARTNERS PHOTOS



BEST RESTAURANT OLIVE B'S

Perennial best restaurant contender Olive B's was voted the No. 1 dining option in Big Sky, topping five-time winner the Lotus Pad, in the biggest upset of 2016. Fresh seafood, a favorite of owners and New England natives Warren "Bibber" and Jennie Bibbins, anchors an exquisite dinner menu that also features diverse salads and carne options.

"It sure is nice to be appreciated by the public," Bibber said. "I've tried to assemble a crew here that cares about what they do. We're glad we're in people's hearts."

olivebsbigsky.com (406) 995-3355

2nd place: Lotus Pad

3rd place: Lone Peak Brewery and Taphouse

OUTLAW PARTNERS PHOTO



BEST BURGER LONE PEAK BREWERY & TAPHOUSE

Eating a burger at Lone Peak is truly a custom experience.

Diners start with their pick of beef, bison, chicken or veggie burger and dress it up to their liking. Feeling spicy? "Make 'em angry" with pepperjack cheese, jalapeno spread and chipotle aioli. Craving a meat-lover's dream? Go with "The Monster," which includes two kinds of pig (provolone and bacon) and two kinds of onion (fried and caramelized).

Don't worry, vegetarians—they've got you covered too. Try "The Hippy," a veggie burger topped with mushrooms, feta and sautéed onions and peppers.

Wash it all down with one of their rotating brews served on nitro.

lonepeakbrewery.com (406) 995-3939

2nd place: The Corral

3rd place: By Word of Mouth



PHOTO COURTESY OF OUSEL & SPUR

BEST PIZZA OUSEL & SPUR PIZZA CO.

If gourmet specialty pizzas are your shtick, look no further than the winner of Big Sky's Best Pizza: Ousel and Spur Pizza Co. Sourcing farm fresh ingredients from Montana farmers, Ousel and Spur tantalizes the taste buds with a range of entrees, but za is their thing.

Try their classic, the Montanan, which combines elk sausage and mozzarella with sage, pickled red onion, mushroom, potato and rosemary. Or, for a more traditional pie, the Margherita is one for the ages. A full bar greets adults, while the Bambino menu provides little ones with delicious options.

ouselandspurpizza.com (406) 995-7175

2nd place: Milkie's Pizza and Pub

3rd place: Blue Moon Bakery

BEST APRÈS SCISSORBILLS SALOON

With live music provided Friday through Sunday at 3:30 p.m.—featuring local talents such as Brian Stumpf, Jeff Bellino and Mark Davidson, among many others—Scissorbills Saloon is where Big Sky pass holders go to swap powder-day stories with friends.

Cocktails and fine Montana beers flow, while après-ski patrons consume mountains of nachos and an array of signature sandwiches. Best of Big Sky voters, with strong enough legs after skiing to climb the Arrowhead Mall stairs, have spoken.

scissorbills.com (406) 995-4933

2nd place: Gallatin Riverhouse Grill

3rd place: Beehive Basin Brewery



OUTLAW PARTNERS PHOTO

ANDERSON ENTERPRISES

BIG SKY'S TEXTILE CLEANING SPECIALIST

Carpet Cleaning • Soil & Stain Protectants • Spot
Cleaning • Upholstery Cleaning • Leather Cleaning • Fine
Area Rug Cleaning • Tile & Grout Cleaning • Hardwood
Floor Cleaning & Conditioning & Odor Removal

IICRC CERTIFIED FIRM

406.995.2811



MONTANA'S PREMIER DESTINATION DISTILLERY
WHISKEY ★ MOONSHINE ★ BOURBON ★ LIQUEUR

COME SEE HOW IT'S MADE.
TOURS, TASTINGS AND GIFT SHOP.



WILLIE'S DISTILLERY SPIRITS OF THE AMERICAN WEST

WILLIESDISTILLERY.COM

Ennis, Montana



312 E. MAIN STREET • ENNIS, MT

Give a gift that *Sparkles*

Award-winning jewelry by Ellie Thompson



Jewelry that tells a story, starts a conversation, and enhances individual style

Creighton Block
GALLERY

Town Center, Big Sky, Montana | creightonblockgallery.com | 406-995-3848



BEST BARTENDER GREG “CARNIE” LISK



OUTLAW PARTNERS PHOTO

Gallatin Riverhouse Grill co-owner Greg “Carnie” Lisk and his partner Kyle Wisniewski have hit upon a magic formula with their mix of grub, drink, atmosphere and entertainment.

Patrons coming to the Riverhouse on a weekend night have to get a little creative with their parking if they want to chow down on Wisniewski’s legendary barbecue and chat up Lisk at the bar. But oh boy, is it worth it.

And next summer it will be even better when a new outdoor bar and music venue open. “I’m just thankful that everyone voted for not only myself, but the Riverhouse crew,” Lisk said. “I couldn’t do it without this badass team.”

gallatinriverhousegrill.com (406) 995-7427

2nd place: Mitchell Bernhard

3rd place: Jeremy Harder

Editors’ Choice: Frank Germo

Frank Germo lived in Big Sky nearly as long as Big Sky Resort has been open. Sadly, Germo lost his battle with cancer Dec. 13 of this year.

Most recently a bartender at The Corral—he also worked at Karst Bar, Halfmoon Saloon and Bunker Bar and Grill—Germa was known for his optimistic nature and twinkling blue eyes. He’ll be missed by fellow employees and regulars alike.



OUTLAW PARTNERS PHOTO



BEST BUSINESS EAST SLOPE OUTDOORS

In 1986, Dave and Katie Alvin opened up shop in Big Sky. Thirty years later, “Super Dave” and Katie are sitting on one of the Best of Big Sky’s most prestigious awards: Best Business.

East Slope Outdoors staff specializes in knowing the wild outdoors that Montana offers, and sets up locals and visitors with some of the best gear, guides and gadgets around. Stop in for retail ski gear, rentals or custom bootfitting in winter and tap into their fishing guides’ insider knowledge in summer.

eastslopeoutdoors.com (406) 995-4369

2nd place: Lone Peak Cinema

3rd place: Gallatin Riverhouse Grill

BRAND PROMISE



Will, Age 6

ENGAGE



Wren, Age 9

ENRICH



Ella, Age 5

EMPOWER



BIG SKY
DISCOVERY ACADEMY
&
COMMUNITY LEARNING CENTER

501 (C)(3) NONPROFIT

Photographer: Kene Sperry

bigskydiscoveryacademy.org

info@bigskydiscoveryacademy.org

406.993.2008



BEST HOTEL / LODGING / GUEST RANCH 320 GUEST RANCH

In a new category this year, 320 Guest Ranch near the border of Yellowstone National Park triumphed among tough competition. Located at the site of Sam Wilson's 1898 homestead along the Gallatin River, 320 offers stunning mountain views, fine food and cozy accommodations.

During summer, guests take in horseback trail rides, fly fishing, casting clinics and barbecues. In winter, visitors bundle up for sleigh rides and to watch 320's annual ski joring competition.

320ranch.com (406) 995-4283

2nd place: Lone Mountain Ranch
3rd place: Buck's T-4 Lodge



PHOTO BY KELLY GORHAM



BEST ANNUAL EVENT BIG SKY PBR



OUTLAW PARTNERS PHOTO

For four years running, professional bull riders have recognized what this community knows, too: Big Sky puts on a damn good show.

This past July, forty bull riders came down to test their mettle against award-winning bulls all too eager to buck them off. At the close of the season in November, the riders once again voted Big Sky PBR as the Event of the Year.

In 2016, more than \$75,000 was raised for charities, and attendees were treated to an art auction, the unforgettable antics of rodeo clown Flint Rasmussen, three nights of live music, and lots of raucous bull riding.

bigskypbr.com (406) 995-2055

2nd place: Farmer's Market
3rd place: Music in the Mountains

Editors' Choice: Big Sky Christmas Stroll

With sleigh rides, cocoa, Christmas treats, visits from Santa Claus and the merry tunes of carolers, it's easy to get sucked into the holiday spirit during the annual Christmas Stroll. There's nothing like seeing Meadow Village and Town Center bedecked in snow while catching up with locals and visitors to drive away any lingering Grinch or Ebenezer Scrooge sentiments.



MAIDEN

SKI CRAFTING



**CUSTOM SKIS
& SIT SKIS
HANDCRAFTED
IN JACKSON HOLE**

MAIDENSKIS.COM | 307.264.1640 | KELVIN@MAIDENSKIS.COM



BEST TRAIL IN BIG SKY OUSEL FALLS TRAIL

The thundering, 100-foot-tall Ousel Falls is a Big Sky landmark and the trail that bears its name was a runaway winner in this inaugural year for the category. Big Sky Community Organization's flagship trail officially starts in Town Center and the stunning cascade is 0.8 miles down the canyon from Ousel Falls Park trailhead.

The easy stroll to the falls is a must for out-of-town visitors, and locals looking for a quick jaunt to the river. It also provides access to the Yellowmule trails, favorites among area mountain bikers.

bscomt.org (406) 993-2112



OUTLAW PARTNERS PHOTO

BEST OUTDOOR RETAILER GRIZZLY OUTFITTERS & BACKCOUNTRY SPORTS



OUTLAW PARTNERS PHOTO

Returning to the top of the heap among area outdoor retail shops, Grizzly Outfitters Ski and Backcountry Sports was voted Best Outdoor Retailer in Big Sky for the second year in a row.

Banking on its talented team of bootfitters, ski techs, sales representatives and outdoor enthusiasts, the shop was named among the 10 Best Ski Shops in the U.S.A. by Unofficial Networks in 2015. Stop by Grizzly for all things outdoor retail as well as ski rentals, demos, and custom ski bootfitting all winter.

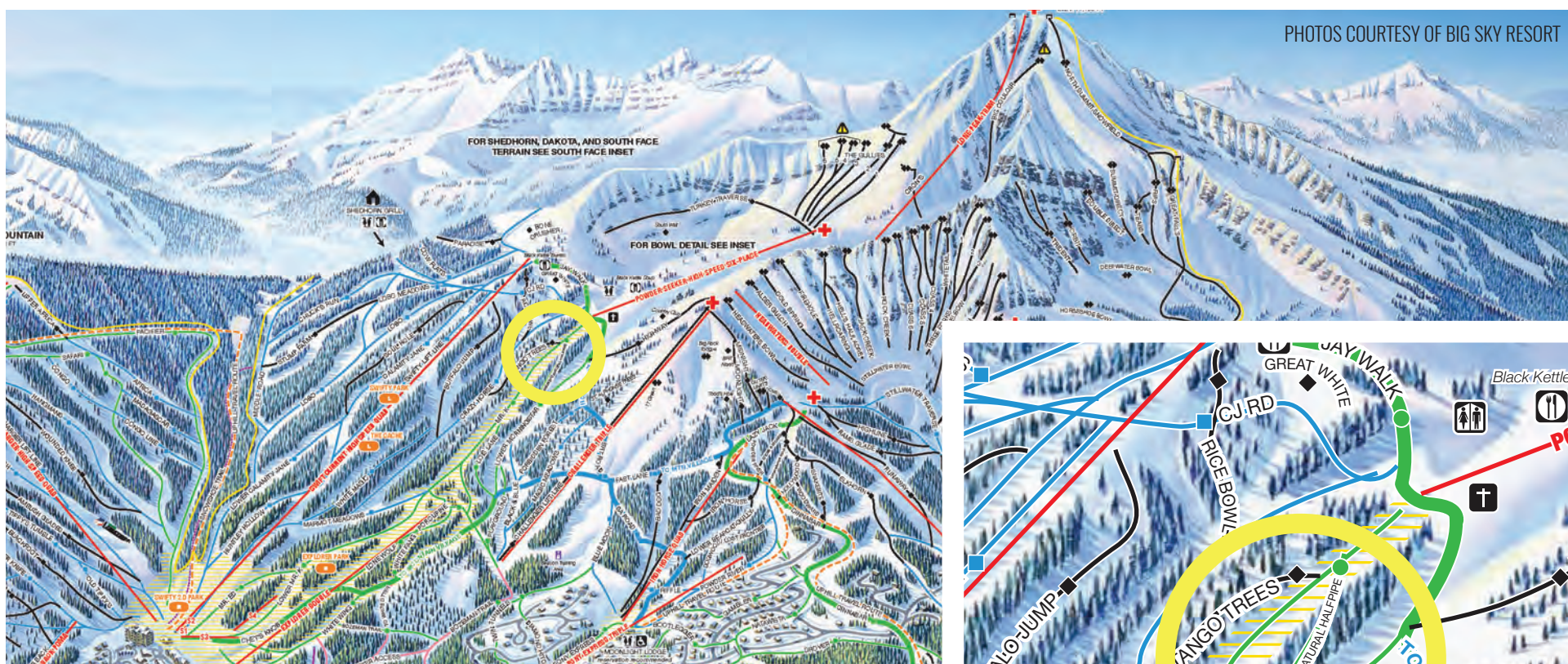
grizzlyoutfitters.com (406) 551-9470

2nd place: East Slope Outdoors

3rd place: Gallatin Alpine Sports



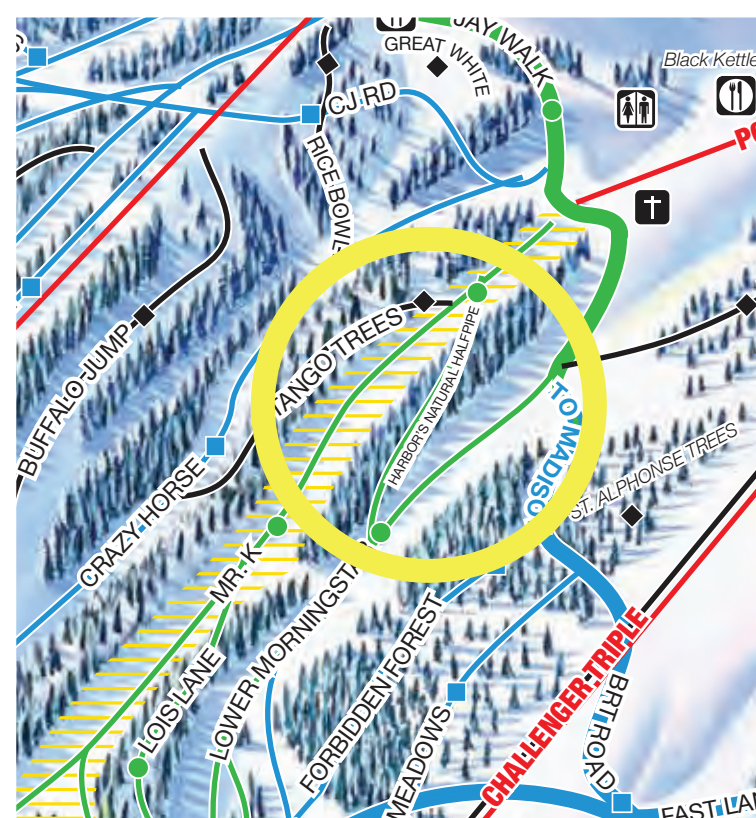
BEST SKI RUN IN BIG SKY HARBOR'S HALFPIPE



Located just off Mr. K is a natural half-pipe dedicated to the memory of Harbor Kingston DeWard, a spirited member of the community that died of parainfluenza in 2015 when he was just 6 years old.

Known for good manners and his appreciation for T-ball, soccer, fishing, dancing, super heroes and swimming, Harbor's fearless approach to—and love for—skiing is memorialized in this gully/half-pipe hybrid just below the base of Powder Seeker chairlift.

bigskyresort.com (800) 548-4486



BEST REAL ESTATE AGENCY PureWest Christie's International Real Estate of Big Sky



Specializing in the community of Big Sky, PureWest Christie's took the throne for the area's Best Real Estate Agency. Christie's depends on its talented and nimble team of agents, says broker Lynn Milligan.

"With all the great offices in the community, it's an honor to have been selected as the best in Big Sky," Milligan said. "We're fortunate to have a small team that has strong results. Each of our agents has many years of individual experience. We're all dedicated to fulfilling our clients' needs and keeping informed about the market."

- 2nd place: L&K Real Estate
- 3rd place: ERA Landmark Real Estate



BEST ARCHITECT CENTRE SKY

For the second year running, owner Jamie Dugaard and his team at Centre Sky took home the prize as Best Architect in Big Sky. The challenges of designing homes in this high-elevation community are many, including heavy snow loads and complicated topography—but Centre Sky works hard to translate a client's aesthetic sensibility into its designs.

Whether the goal is to implement a heating system to reduce utility costs, or an “off the grid” home that requires zero fossil fuels to operate, sustainability is a critical part of the Centre Sky design process.

centresky.com (406) 995-7572

2nd place: Reid Smith

3rd place: Locati



OUTLAW PARTNERS PHOTO



PHOTO BY AUDREY HALL



BEST BUILDER BIG SKY BUILD

As it enters its second decade, Big Sky Build continues to grow its reputation for using top-notch craftsmanship in the construction of custom homes—think light-filled residences with stunning geometry.

Owner John Seelye's loyalty to both clients and employees led the Big Sky Chamber of Commerce to recognize him as the 2016 Business Person of the Year, prompting one of the shortest award acceptance speeches of the night. Seelye said the recognition was appreciated and unexpected.

It shouldn't have been unexpected, though. This is the second year running that voters named Seelye and his crew the best builders in Big Sky.

bigskybuild.com (406) 995-3676

2nd place: Teton Heritage Builders

3rd place: Haas Builders

Restaurant at Rainbow

Happy Hour: 4-6pm Daily

Dinner: 5-10pm Daily

Holiday Happenings

Christmas Eve: 4-10pm featuring live music and a special menu

Christmas Day: 4-10pm featuring a special menu

New Year's Eve: 4pm-1am featuring a special menu and a champagne toast

New Year's Day: 4-10pm featuring a special menu

Reservations Recommended and necessary for New Year's Eve!

RAINBOW RANCH LODGE

RESTAURANT • BAR • HOTEL • WEDDINGS • EVENTS

RainbowRanchBigSky.com
406.995.4132 | 42950 Gallatin Road, Big Sky MT





KGLT

ALTERNATIVE PUBLIC RADIO

LIVE STREAMING AND MOBILE APPS AVAILABLE ONLINE AT KGLT.NET

REQUESTS 406-994-4492

SOUTHWEST MONTANA'S COMMERCIAL-FREE ALL MUSIC RADIO STATION

BOZEMAN 91.9 FM
MSU 97.1
HELENA 98.1
LIVINGSTON 89.5
GARDINER/MAMMOTH 107.1

406-581-3014 **BITTERROOT** TIMBERFRAMES 406-581-3014



Authentic Handcrafted Timber Frames
RESIDENTIAL BARNs COMMERCIAL
Frame & Shell Packages Installed on Your Site
Standard Plans Free

567 Three Mile Creek Rd Stevensville, MT 59870
bitterroottimberframes.com brett@bitterrootgroup.com



A MONTH FROM NOW YOU'LL WISH YOU HAD STARTED *TODAY*



BIG SKY'S MOST COMPLETE WORKOUT FACILITY

VISIT BIGSKYHF.COM TO SIGN UP

DAY, WEEK, & LONG TERM MEMBERSHIPS

MEADOW VILLAGE CENTER | 32 MARKETPLACE, BIG SKY, 59716



BEST TEACHER Renee Zimmerman

Ophir School fourth grade teacher Renee Zimmerman dethroned her counterpart and colleague Jeremy Harder as Big Sky’s Best Teacher this year. Harder says the upstate New York native was once his teacher’s aid but has since come into her own as an educator.

“What’s unique about Renee is that she’s fired up every day,” Harder said. “She’s really good at seeing the kids’ individual needs and will spend time with a kid all day to get them caught up if that’s what they need. It’s been fun to watch her grow and create that craft of teaching over the years.”

2nd place: Jeremy Harder

3rd place: Tony Coppola



BEST ARTIST / PHOTOGRAPHER Ryan Turner

PHOTO COURTESY OF RYAN TURNER PHOTOGRAPHY



There are many talented creatives in Big Sky, and it’s no wonder with Lone Mountain and the surrounding landscape providing a muse. Photographer Ryan Turner also won this category in 2015, its inaugural year. He and his wife Angie have a gallery in the Bighorn Shopping Center where his large-format prints are displayed, and Turner’s images can be found in publications like Powder, Skiing, Mountain Magazine, Outside, and the Wall Street Journal.

“I’m inspired by the amazing activities and nature that surround us here in Montana,” he said. “Thanks, Big Sky, for all of the support and inspiration!”

ryanturnerphotography.com (406) 580-5997

2nd place: Kene Sperry

3rd place: Dave Pecunies



BEST NONPROFIT GALLATIN RIVER TASK FORCE

PHOTO BY RICH ADDICKS



Gallatin River Task Force Executive Director Kristin Gardner and her staff of three have a tough line to walk: How does Big Sky accommodate growth without degrading one of the natural resources that brings people here in the first place?

This conservation organization on the front lines must be doing something right, as evidenced by financial and volunteer support from the community for projects like the Big Sky Sustainable Water Solutions Forum, stream bank stabilization on the West Fork of the Gallatin, and watershed monitoring following the March effluent pond spill.

“We’ve had a lot of strong partnerships over the past year or two that have driven larger projects forward,” Gardner said.

gallatinrivertaskforce.com (406) 993-2519

2nd place: Women in Action

3rd place: Eagle Mount

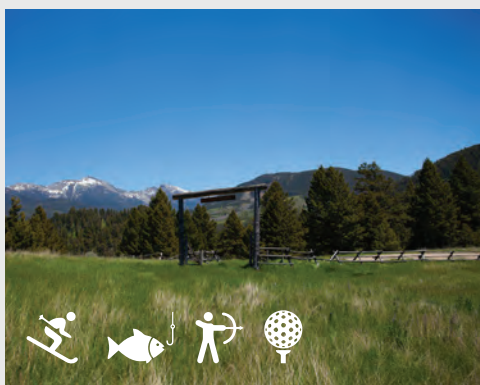
Editors’ Choice: Montana Land Reliance

Montana Land Reliance is the largest land trust in the state, protecting nearly 1 million acres under conservation easements. In April, the organization opened a regional office in Big Sky and hired Jessie Wiese as its southwest manager.

Conservation easements are a tool for private landowners to ensure preservation of open spaces, wildlife habitat, agricultural uses and other conservation values. MLR will be an asset to this community as it experiences explosive growth.

FIND YOUR PERFECT PROPERTY

BIG SKY • MOONLIGHT BASIN • SPANISH PEAKS MOUNTAIN CLUB • YELLOWSTONE CLUB • SKI, GOLF, & FISHING PROPERTIES



MILL CREEK RANCH - MOONLIGHT BASIN

Not all backyards are created equal: HUNT, FISH, SKI * 2,636 +/- acres * The LARGEST tract of land available in Moonlight Basin* Multiple homesites and one existing home* Magnificent views * No covenants* No HOA * Unparalleled privacy * Abuts the Lee Metcalf Wilderness* Deeded access through the gated Jack Creek Road to Big Sky or Ennis * Co-listed with Swan Land* \$18,750,000. * Virtual tour online * MLS 205504



1214 SILVERADO TRAIL - SPANISH PEAKS NORTH

NEWLY REMODELED luxury home now offering 5 Bedrooms/6 Bathrooms * +/- 6,663 sq. ft. * 6 fireplaces * Multiple porches and patios * Fully turn key * 3 car heated garage * Great value per sq. ft compared to Club options * Ready for Immediate occupancy* Excellent finishes, location and condition. * Close to Yellowstone Club and Spanish Peaks Mountain Club * A must see * \$2,850,000 * Virtual tour online * MLS 202031



CAMP ARROWHEAD - BEEHIVE BASIN

Extraordinary property near Beehive Basin trailhead in Big Sky Mountain Village * Main house and guest house totaling 8 Bedrooms and 7.5 Bathrooms * +/- 7,672 Sq. Ft * 25 acres * Fully turn key * Fabulous Lone Mountain and Beehive views * Solar and Wind power * No covenants * No HOA * The rarest kind of Big Sky property * \$4,995,000 * Virtual tour online * MLS 208912



4 LITTLE PLUME - CASCADE SUBDIVISION

* Mountain Village * Direct ski/in ski/out access to White Otter lift on two sides * Finely crafted post and beam timber frame throughout* 4 Bedrooms and 5 Baths in the Main House. *Fantastic VBRO apartment over garage has 1 Bedroom and 1 bath, fully equipped kitchen, laundry and living room with gas fireplace. Oversized 1.7 acre corner lot. Dramatic Lone Mountain view. \$2,900,000 * MLS 216922



BERKSHIRE HATHAWAY HomeServices Montana Properties



Stacy Ossorio, Broker
C: 406.539.8553
stacy.ossorio@gmail.com

Eric Ossorio, Broker
C: 406.539.9553
eric.ossorio@gmail.com

BHSMT.COM

An independently owned and operated broker member of BRER Affiliates, Inc. Prudential, the Prudential logo and Rock symbol are service marks of Prudential Financial, Inc. and its related entities, registered in many jurisdictions worldwide. Used under license with no other affiliation of Prudential. Equal Housing Opportunity. All information contained herein is derived from sources deemed reliable; however, is not guaranteed by Prudential Montana Real Estate, Managing Broker, Agents or Sellers. Offering is subject to error, omissions, prior sales, price change or withdrawal without notice and approval of purchase by Seller. We urge independent verification of each and every item submitted, to the satisfaction of any prospective purchaser.



COMMUNITY MEMBER OF THE YEAR PETER SCHMIEDING



OUTLAW PARTNERS PHOTO

Dr. Peter Schmieding has practiced dentistry in Big Sky for more than 20 years, working from his office here two days a week. But his work for the nonprofit Tsering's Fund for the past 10 has become his true passion and Best of Big Sky voters recognized this in 2016.

The organization has raised approximately \$600,000 to educate young Nepali girls who would not otherwise have the opportunity, and more recently to fund earthquake relief efforts after the devastating tremors that hit the country in 2015.

"I really believe it's not about me," Schmieding said. "I'm only out there to try to help raise money for others. But I'm very appreciative that people recognize that, it means we're getting the word out."

Eight Lone Peak High School Interact Club members will accompany Schmieding on his next service trip to Nepal in March. "They're the future, these kids," he said. "The future of Tsering's Fund."

2nd place: Sally Fisher

3rd place: Barbara Rowley

24 / 7 EMERGENCY SERVICES

NONSTOP HEALTHCARE



BOZEMAN HEALTH
BIG SKY MEDICAL CENTER

Emergency Department: Monday-Sunday 24/7

Family Medicine Clinic: Monday-Friday 8:00 am-5:00 pm

Retail Pharmacy: Monday-Friday 9:00 am-6:00 pm

Saturday-Sunday 9:00 am-1:00 pm 406-995-6500

Closed Christmas and New Year's Day

24/7 Hospital and Emergency Services

Family Medicine Clinic same- and next-day appointments

Diagnostic Imaging X-Ray, CT, and MRI

Laboratory provider ordered testing

Retail Pharmacy new, transfer and refill prescriptions

406-995-6995

334 Town Center Avenue, Big Sky

BigSkyMedicalCenter.com

WARREN MILLER™ PERFORMING ARTS CENTER

Celebrating 100 performances in Big Sky

2016-17 SEASON LINEUP

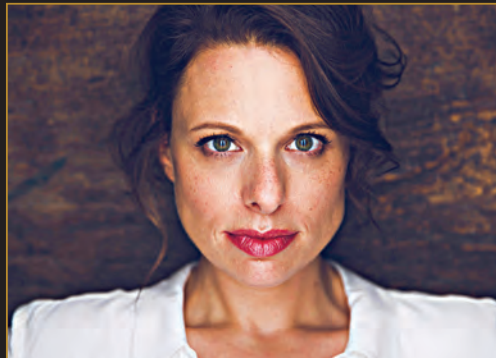
DEC 29
RYTHMIC CIRCUS
Tap Dance & Big Band



JAN 7
ROOMFUL OF TEETH
GRAMMY-Winning A Cappella



JAN 21 & 22
THE WINTER'S TALE
Broadway in Big Sky



FEB 18
MIKE SUPER
Magic & Illusion

MARCH 3
REGGIE WATTS
Vocal Artist/Beatboxer/Comedian



MAR 10
**HIROMI:
THE TRIO PROJECT**
Electrifying Music from Japan

MARCH 18
JAMES SEWELL BALLET
Big Sky's Favorite Ballet Company



MAR 25
ISHMAEL
Moby Dick at the Theatre

for tickets & details: warrenmillerpac.org

THE 16/17 WINTER SEASON PRESENTED BY:

